



140 Bower Street, Bedford, MK40 3QZ





140 Bower Street  
Bedford  
MK40 3QZ

Price £350,000

Terrace house  
Living/dining room  
Kitchen  
Bathroom  
Three bedrooms  
Gas central heating  
Rear garden  
No chain  
Freehold



- Council Tax Band C
- Energy Efficiency Rating D

Bay fronted terrace home in a convenient location...



We are pleased to bring to the market this Victorian, three bedroomed terrace home which is located in the popular Castle Road area of Bedford. There is no chain, so a quick completion is available.

On the ground floor, the entrance hall leads to a spacious through living/dining room which has a bay window to the front. Moving towards the back of the house, the kitchen has been fitted with modern units and just beyond, the bathroom can be found.

On the first floor, there are three bedrooms.

Outside there is a reasonable size enclosed rear garden.

Bower Street is situated in the heart of the Castle Road area, linking Russell Park by The Embankment to Goldington Road. There are a wide range of local amenities and independent shops, with Bedford town centre close by offering a wider range of shops, restaurants and excellent local schools. Bedford also boasts fast rail links to London.

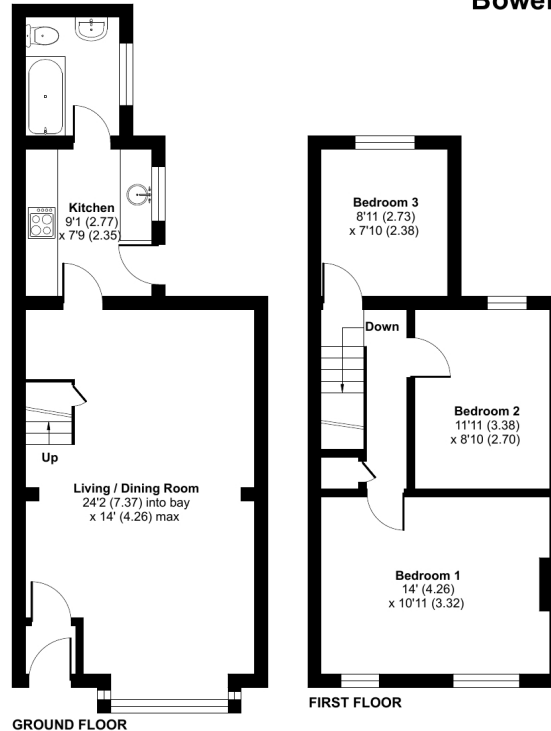
Bedford Railway Station • 1.5 miles  
Milton Keynes • 18 miles  
A1 Black Cat Roundabout • 8 miles  
M1 Junction 13 • 13 miles



## Bower Street, Bedford, MK40

Approximate Area = 851 sq ft / 79 sq m

For identification only - Not to scale



Floor plan produced in accordance with RICS Property Measurement 2nd Edition, Incorporating International Property Measurement Standards (IPMS2 Residential). © nichecom 2025. Produced for Lane & Holmes. REF: 1309736



01234 327744 | [sales@laneandholmes.co.uk](mailto:sales@laneandholmes.co.uk) | [www.laneandholmes.co.uk](http://www.laneandholmes.co.uk) | 66-68 St Loyes Street, Bedford, Bedfordshire, MK40 1EZ

Agents Notes: The agent has not tested any apparatus, equipment, fixtures & fittings or services and so cannot verify that they are in working order or fit for the purpose. A buyer is advised to obtain verification from their solicitor or surveyor. All photographs shown are for illustration only and may depict items that are not for sale or included in the sale of the property. Please note that we have not checked the situation with regards to planning consents, building regulation consents and any other relevant consent relating to this property and therefore, any interested applicant should carry out their own enquiries with the appropriate authorities. All measurements are approximate and for guidance only. The particulars do not form part of any contract and all properties are offered subject to contract.

